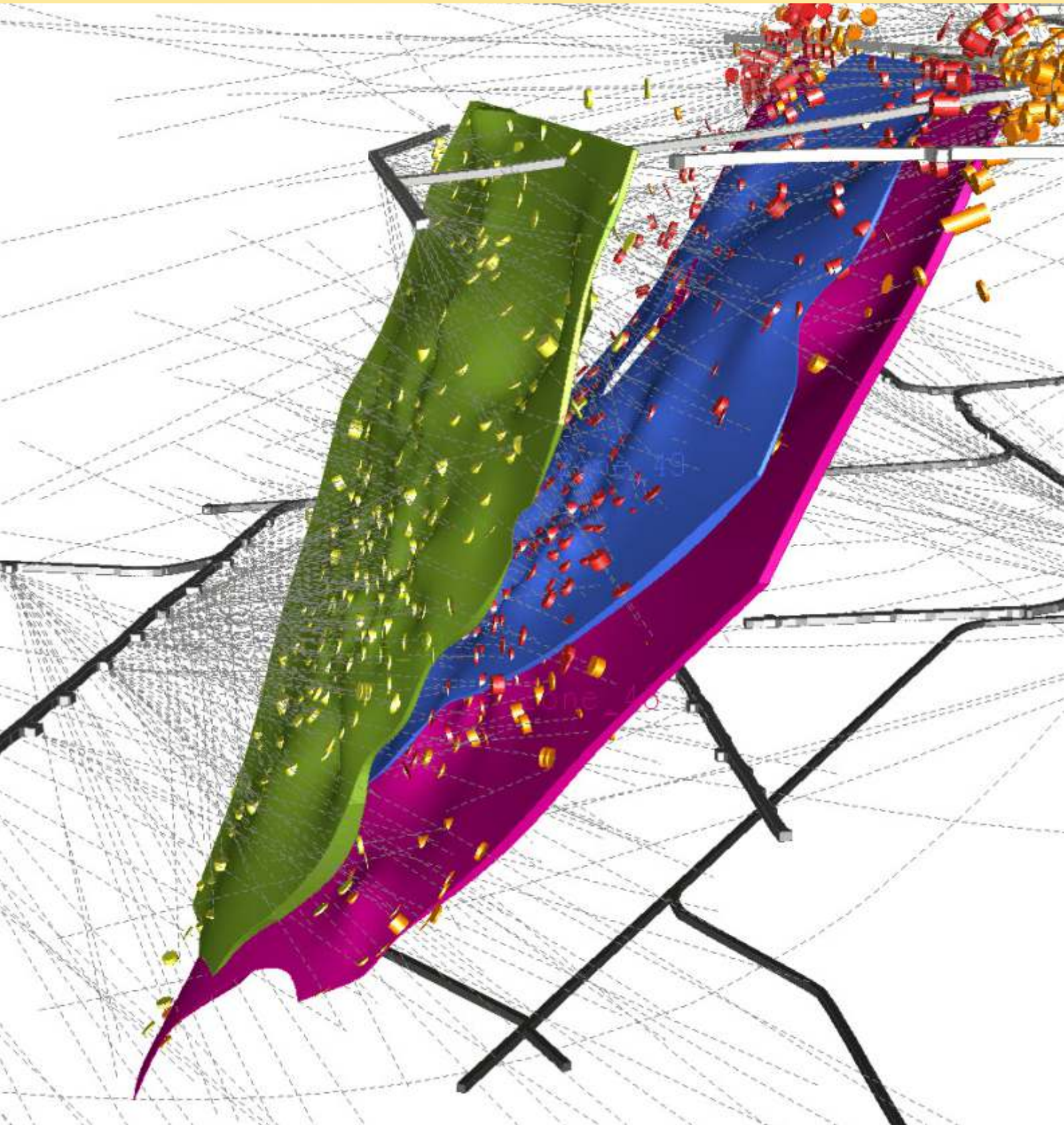


GEOLOGY & EXPLORATION



SERVICES

The Millcreek Mining Group is affiliated with Millcreek Engineering, an integrated engineering company serving the energy and resources industries. We provide support at every stage of project development ranging from geologic and mining consulting services, through to detailed engineering, procurement and construction management (EPCM).

Through our selection of core professionals we bring to your project a team of trusted and respected industry experts. An understanding of our client's needs, coupled with effective management and a streamlined corporate structure, allow us to provide an excellent and highly competitive service to the mining and natural resources sectors.

The Millcreek Mining Group's geologic personnel have initiated, managed, and planned numerous exploration and development projects throughout North America and overseas. We also provide geologic support to existing operations with ongoing resource delineation, resource/reserve updates and geologic investigations. We work hand-in-hand with mine operators and developers to add value to our client's projects.

Services provided include:

- Exploration planning and design
- Field services (sampling, mapping, drilling)
- Data management
- Quality control / quality assurance / chain of custody
- Project management/technical oversight
- Safety and environmental compliance
- Core and cuttings logging
- Geological / geophysical / statistical / geostatistical interpretation
- Geologic modelling and resource estimation
- Technical reporting of resources/reserves (NI43-101, JORC, etc.)
- Geologic investigations on adverse conditions affecting mining
- Due diligence audits and asset evaluation

Commodities

Our personnel have previous experience in commodities including:

- Coal (thermal and metallurgical)
- Precious metals
- Base metals
- Oil shale / oil sand
- Potash, phosphate, trona, mineral sands
- Industrial minerals
- Aggregates

For additional details on our experience, please request a copy of the resumes of our key personnel.



Millcreek Mining
GROUP

Millcreek Mining Group – USA

1011 East Murray Holladay Road
Suite 100 Salt Lake City, UT 84117
P: (801) 904-2260
F: (801) 904-2261
E: info@millcreekgm.com

Millcreek Mining Group – India

IceCube Engineers Pvt Limited
905 Silicon Towers Ahmedabad,
Gujarat, India
P: +91 79 40012500
E: info@icecubeeng.com

Millcreek Engineering

1011 East Murray Holladay Road
Suite 200 Salt Lake City, UT 84117
P: (801) 904-2260
F: (801) 904-2261
E: info@millcreekeng.com